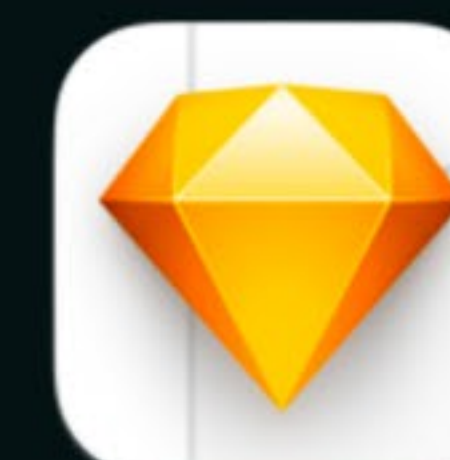


MONIQA FEATURES



HOW TO USE OPEN TYPE FEATURES AND VARIABLE FONT OPTIONS



Select the text first and then open up the **Properties panel**

MONIQA

Weight 900 / Width 100 / Italic 0 / Optical Size 96

Variable Axes

Standard Ligatures

Discretionary Ligatures

Alternate Characters

Properties >> | ☰

T Type Layer

Transform

W 1399.04 px X 430.78 px
H 468.22 px Y 703.23 px
0.00°

Character

Monika
Black Display
Weight +900
Width +100
Italic 0
Optical size +96

450 pt 400 pt
Metrics 0
Color

Paragraph

Type Options

TT T_T T¹ T₁ T̄ T̅ Ist ½
fi Œ st A aā T a.

Quick Actions

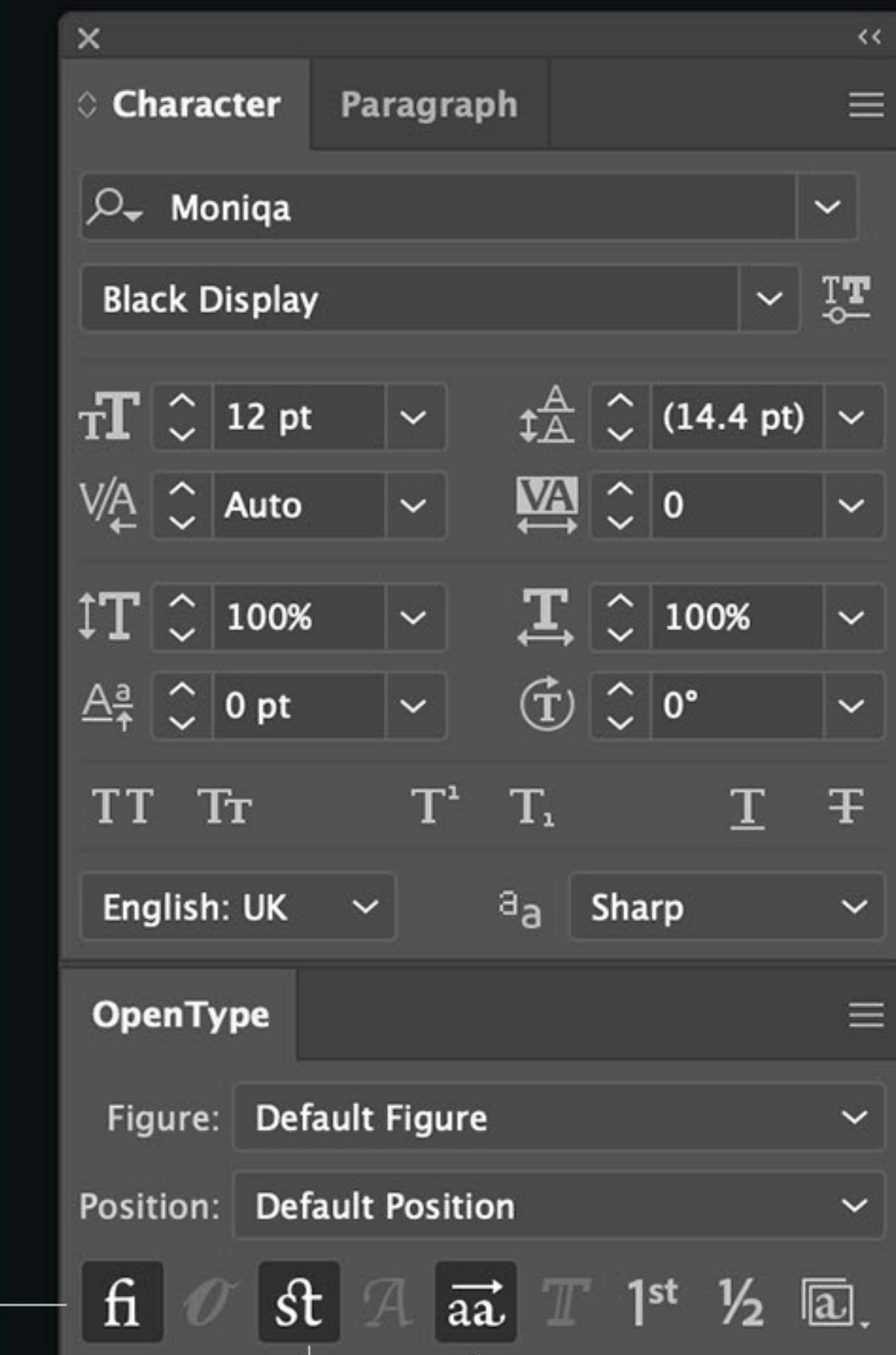
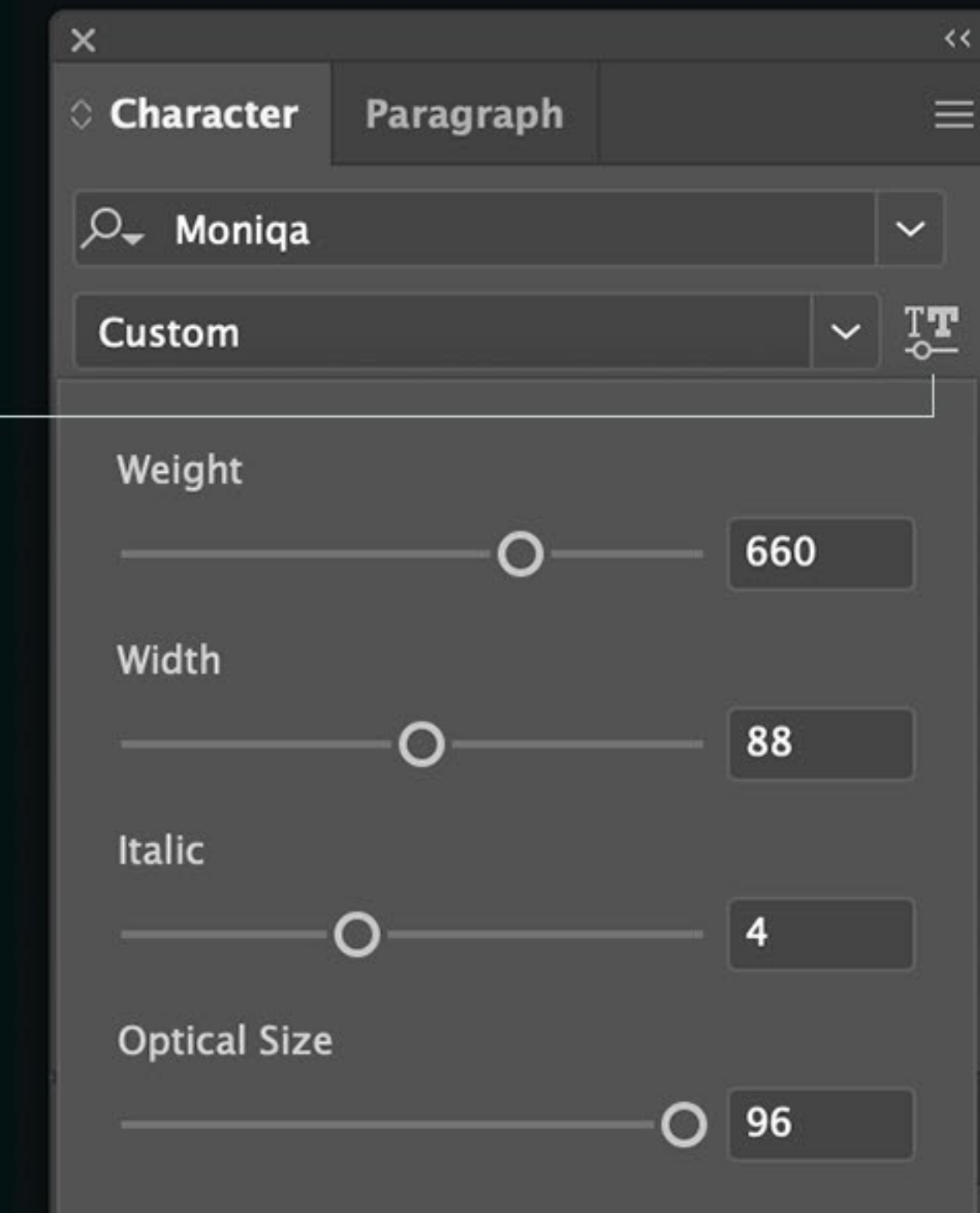


Select the text first and then open up the **Character & Open Type** panels

MONIQA

Weight 660/ Width 88 / Italic 4 / Optical Size 96

Variable Axes



Standard Ligatures

Discretionary Ligatures

Alternate Characters



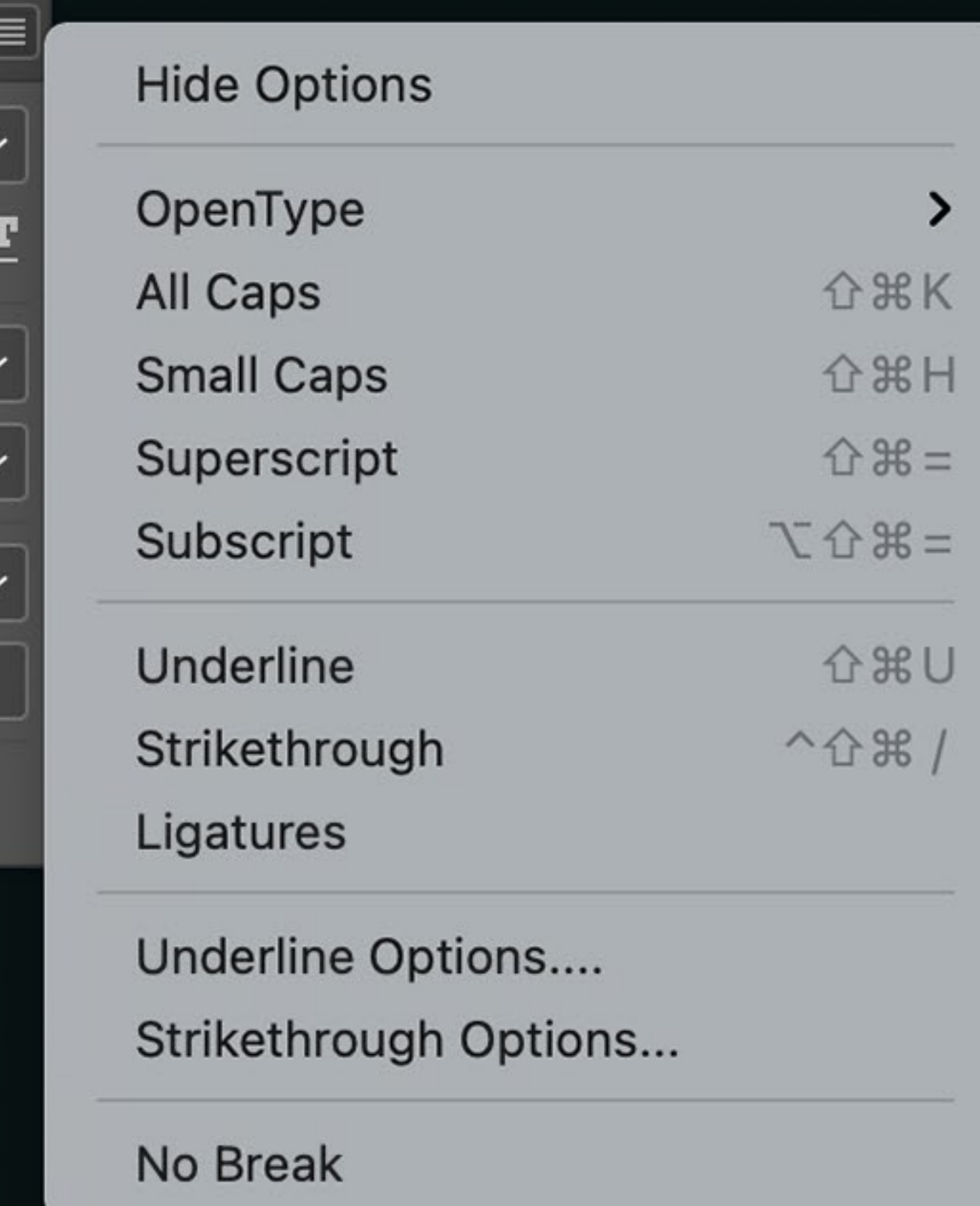
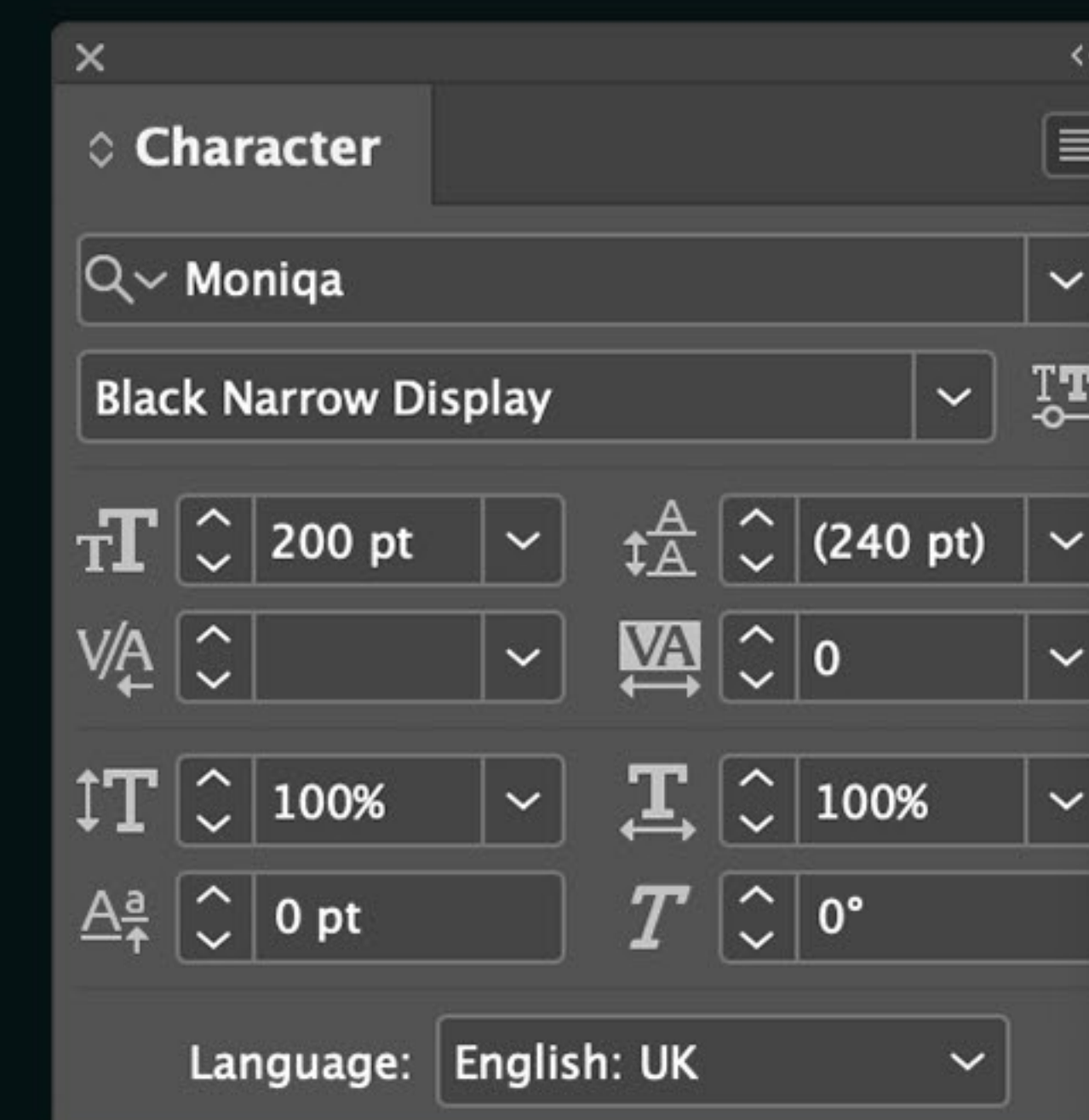
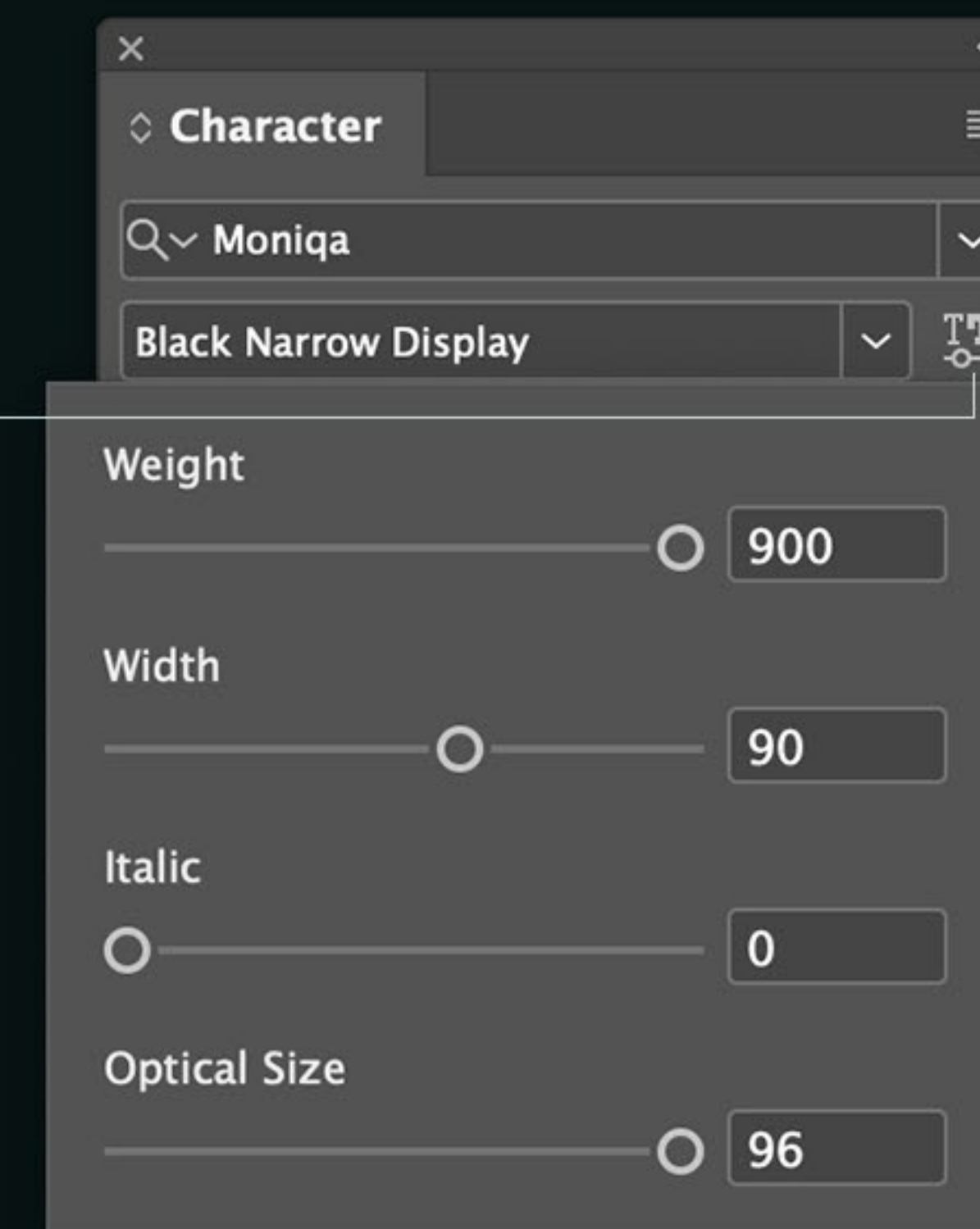


Select the text first and then open up the **Character - Right click on the hamburger menu - Open Type**

MONIQA

Weight 900 / Width 90 / Italic 0 / Optical Size 96

Variable Axes





Select the text first and then click on the **Variable Icon for Variable Font Options**
For Open Type Features click on **Type - OpenType Features**

MONIQA

Weight 900 / Width 100 / Italic 0 / Optical Size 96

Variable Axes

